



Your doorway to a complete hardware solution

## ARCHITECTURAL HARDWARE FITTINGS



+91 9855016077

[www.nscproduct.com](http://www.nscproduct.com)



# INTRODUCTION

GIVE YOUR DESIGN A TOUCH OF EXCELLENCE!!!

Well, on years of market knowledge and capitalization, our organization is deemed as one of the most proficient Wholesalers, Distributor, Supplier and Trader of Hardware Products. Our organization **N.S.C. Product** was commenced in the year 2008 on a client-centric philosophy and thus we ensure that each of our actions result in escalating our clients level of satisfaction.

We majorly hold expertise in offering products like Mortise Handle Lock, Door Closer, Cabinet Handle, etc. The entire range of our products stands for its optimum quality standards, strength, and durability. The organization invests major emphasis on ensuring that only premium grade quality products are sourced and are forwarded to our clients.

Thus, we have made rewarding contracts with a few of the leading manufactures and channel partners of these manufacturers for ascertaining a quality certified, and authentic range of products. Also, being a client-sensitive firm; we give special emphasis on specific client needs to ensure the total satisfaction of our clients. In addition to this solely owing to our facility located at Ludhiana, Punjab, India, we are capable of directing our goods in any part of the country irrespective of the quantum and the shorter time frame involved.



# LEAK PROOF SMOOTH FUNCTION



## NSC DOOR CLOSER



**HUT MODEL**

APPLICABLE DOOR WEIGHT CHART

DOOR CAPACITY	GURANTEE	USE	MRP
100KG (EASY TO INSTALL)	TWO YEAR	DOUBLE SPEED CONTROL USE RIGHT HAND & LEFT HAND DOOR	1200 / RS



**SLEEK MODEL**

APPLICABLE DOOR WEIGHT CHART

DOOR CAPACITY	GURANTEE	USE	MRP
80KG (EASY TO INSTALL)	TWO YEAR	DOUBLE SPEED CONTROL USE RIGHT HAND & LEFT HAND DOOR	1000 / RS



**SINGLE SPEED**

APPLICABLE DOOR WEIGHT CHART

DOOR CAPACITY	GURANTEE	USE	MRP
50KG (EASY TO INSTALL)	ONE YEAR	USE RIGHT HAND & LEFT HAND DOOR	800 / RS



**PELMET ARM**

APPLICABLE DOOR WEIGHT CHART

DOOR CAPACITY	GURANTEE	USE	MRP
100KG (EASY TO INSTALL)	THREE YEAR	USE RIGHT HAND & LEFT HAND DOOR WITH ARM STOPER	S.S-1700 / RS B.A-2200 / RS

**+91 9855016077**  
**www.nscproduct.com**





ALL 5 SECURITY  
STRENGTHS  
EST. **2008**



## NSC DOOR LOCK

**+91 9855016077**

**[www.nscproduct.com](http://www.nscproduct.com)**



**I-JEEP**



**I-304**



**I-303**



**I-305**



**I-301**



**I-306**





## NSC DOOR LOCK

**+91 9855016077**

**[www.nscproduct.com](http://www.nscproduct.com)**



**S-111**



**S-JEEP**



**S-FLAT**



**S-HOCKY**

BRING YOUR  
HOUSE SAFE

**NSC**  
GREEN HOME  
**NSC DOOR LOCK**



**RADO**



**078**



**SLIDE**



**SPOON**



**VENUS**



**TIE**





**ACE**



*Collection*  
of your home



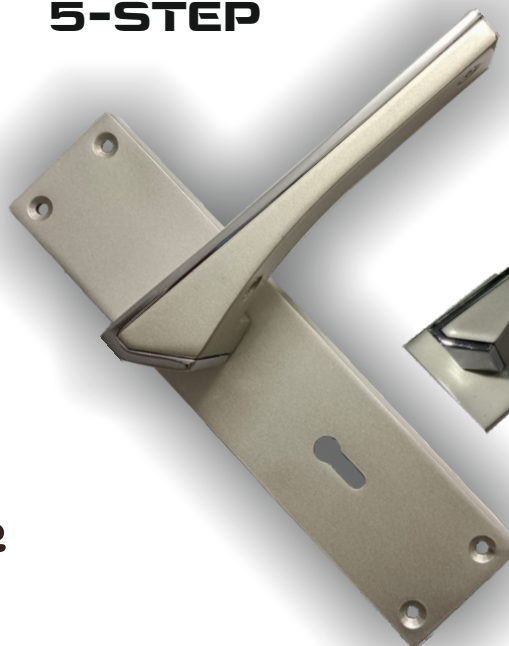
**TEXA**



**5-STEP**



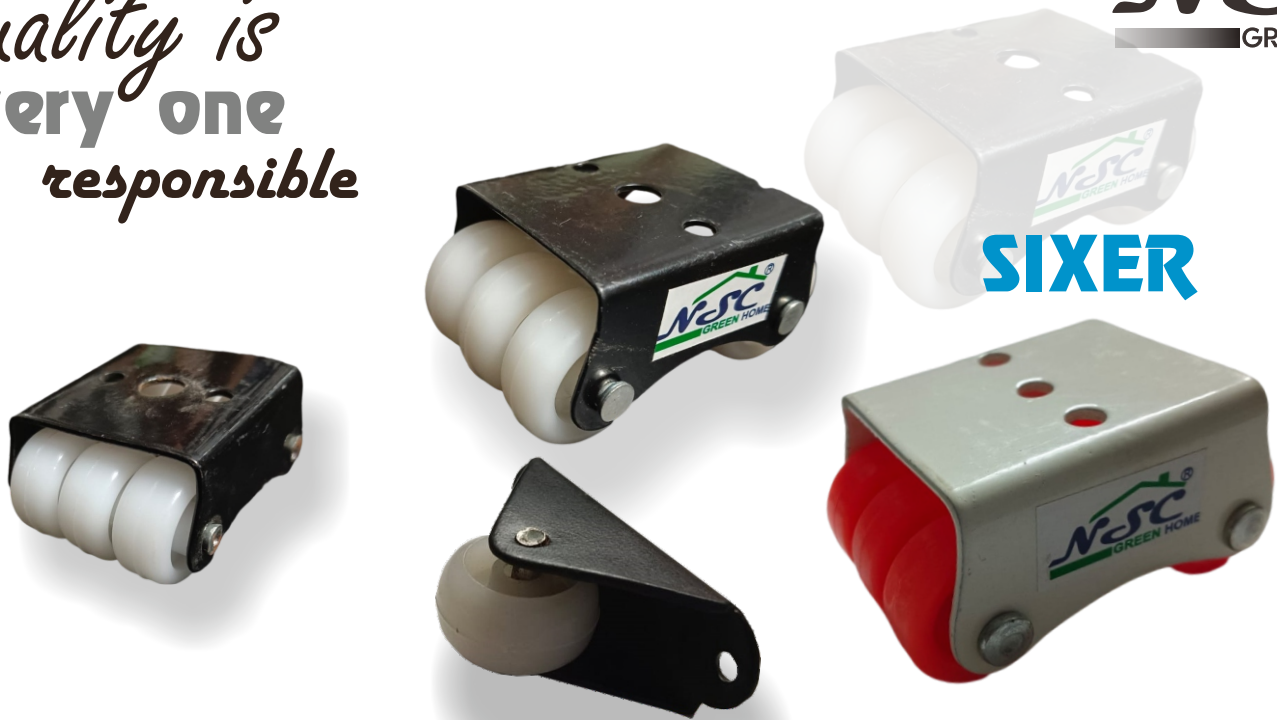
**SLIDE-C**



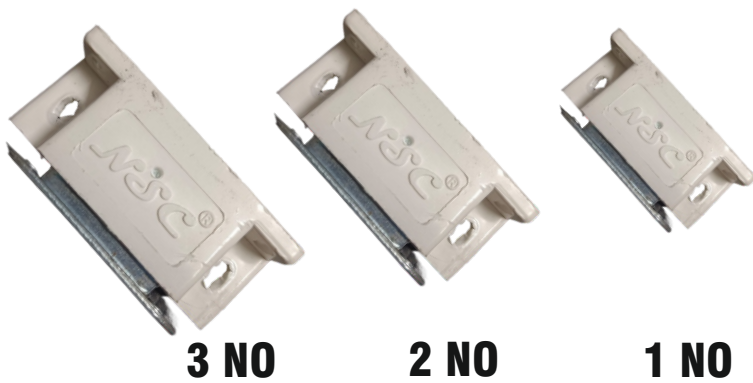
**145**

*Quality is*  
**every one**  
*responsible*

*Quality is  
every one  
responsible*



## MAGNET CATCHER



## PVC BUFFER



## DOOR HOLDER





# SOFA LEGS



**ADJUSTABLE PVC LEG**

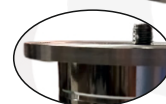
**ADJUSTABLE STEEL LEG**



**45 MM**



**50 MM ( 2 MM )**



**4MM PLATE**



**50 MM ( 4 MM )**



**L TYPE LEG**



## TELESCOPIC CHANNEL

SIZE	FINISH	PCS/SET	BOX QTY.	MRP
250 MM / 10"	ZINC	SET	15	250 /-
300 MM / 12"	ZINC	SET	15	300 /-
350 MM / 14"	ZINC	SET	15	350 /-
400 MM / 16"	ZINC	SET	15	400 /-
450 MM / 18"	ZINC	SET	15	450 /-
500 MM / 20"	ZINC	SET	15	500 /-
550 MM / 22"	ZINC	SET	15	550 /-



# CURTAIN ACCESSORIES



**C-CUT**



**C-CUT**



**4-LINE**



**NS-1**



**4-LINE**



**NS-2**



**ALUMINUM SPOT**



**STEEL SPOT**



**WALL TO WALL**

# MAIN DOOR HANDLE

**MODEL : 101**



**SIZE(MM) : 300,450**

**MODEL : 102**



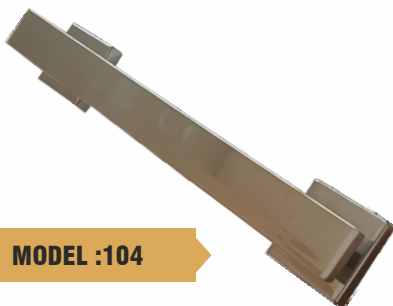
**SIZE(MM) : 300,450,600  
,900**

**MODEL : 103**



**SIZE(MM) : 300,450**

**MODEL :104**



**SIZE(MM) : 300,450,600**

**MODEL : 105**



**SIZE(MM) : 300,450,600**

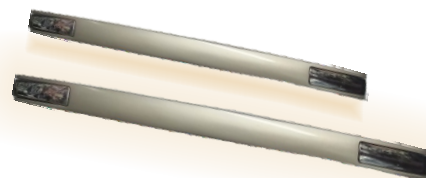
# MAIN DOOR HANDLE

**RAJWADI**



SIZE(MM) : 96,128,160

**MODEL NO : 1044**



SIZE(MM) : 96,160,224

**CELERIO**



SIZE(MM) : 96,160,288

**ACCORD**



SIZE(MM) : 96,128,160,288

**MODEL NO : 059**



SIZE(MM) : 96,128,288



# MAIN DOOR HANDLE

**BM-01**



SIZE(MM) : 96,128,160,288

**MODEL NO : 152**



SIZE(MM) : 96,128,160,288

**MODEL NO- 1033**



SIZE(MM) : 96,128,160

**FS- 508**



SIZE(MM) : 96,128,160,288

**1006**



SIZE(MM) : 96,128,160,288

# MAIN DOOR HANDLE

**DATSUN**



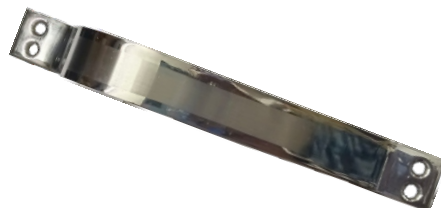
SIZE(MM) : 96,128,160,288

**501**



SIZE(MM) : 96,128,160,288

**SLIDE HANDLE**



SIZE(inch) : 5" 6" 8"

**D-HANDEL**



SIZE(inch) : 5" 6" 8"

**1002**



SIZE(MM) : 96,128,160,288



**GREEN HOME**

**# 7865/2A, STREET NO 6 ,  
NEW JANTA NAGAR , LUDHIANA**



**NSCPRODUCT@GMAIL.COM | WWW.NSCPPRODUCT.COM**